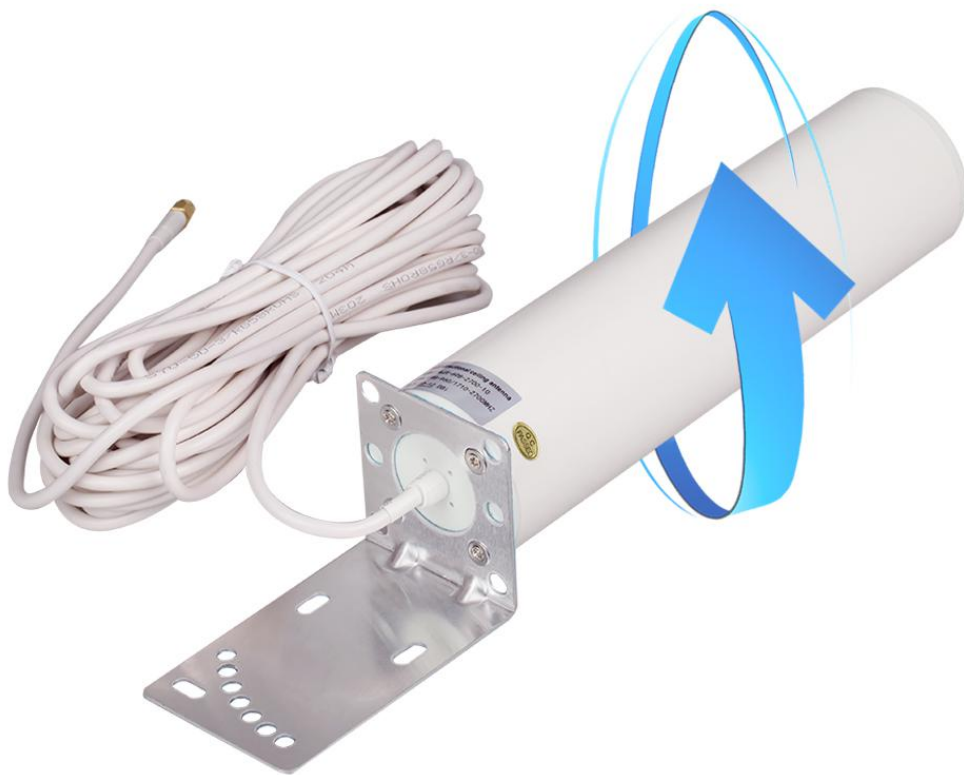


LTE Antenna

**JCF-4G-3-15**



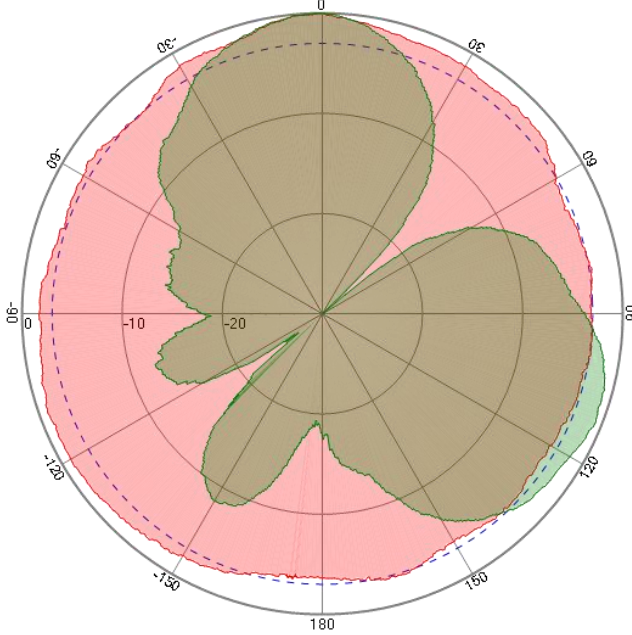
**Full 360° Reception Of BTS Signal**



## SPECIFICATIONS

<b>Electrical Specifications</b>	
Model No.	JCF-4G-3-15
Frequency Range	700-960/1710-2700MHz
Gain	3/4dBi
VSWR	≤1.5
Input Impedance	50Ω
Polarization	Vertical
Horizontal Half Power Angle	360°
Vertical Half Power Angle	70/50°
Max Input Power	100W
Lightning Protection	DC Ground
<b>Mechanical Specifications</b>	
Working Temperature	-40°C~ + 65°C
Connector Type	SMA male pin
Cable Type	15M RG58U
Antenna Weight	0.3kg
Size	Φ63x320mm
Pole Diameter	Φ35~55mm
Rated Wind Velocity	210km/h
Antenna Cover Material	ABS
Color	White

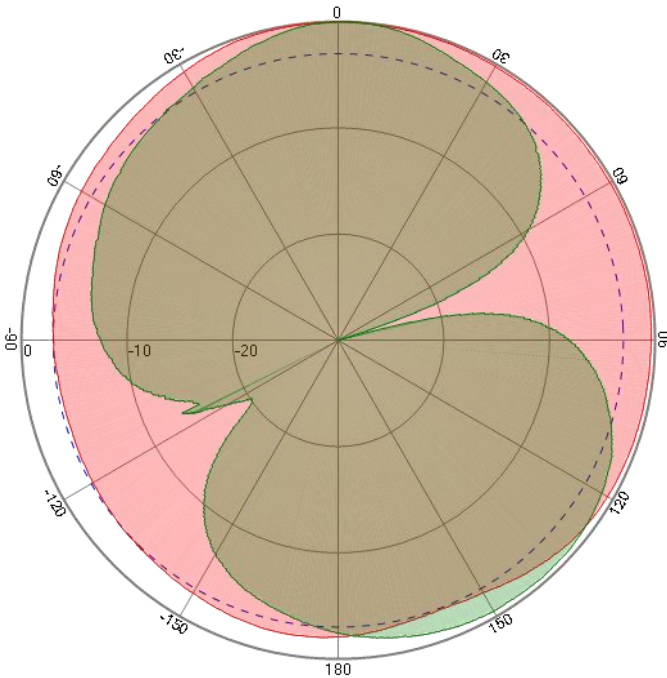
**Radiation Pattern**



测试频率: 2400  
 测试时间: 2013-8-19  
 测试平面: 水平面主极化  
 极化方式: 垂直  
 峰值电平: -54.46  
 3dB宽度: 100.56  
 前后比值: 2.03  
 比对增益: -18.10  
 TCH(0): -54.46

测试频率: 2400  
 测试时间: 2013-8-19  
 测试平面: 垂直面主极化  
 极化方式: 垂直  
 峰值电平: -50.86  
 3dB宽度: 44.51  
 左一旁瓣: 15.16  
 左二旁瓣: 13.15  
 左一零深: 18.86  
 右一旁瓣: 5.89  
 右二旁瓣: 0.91  
 天线倾角: -52.61

Gain: 4.68



测试频率: 960  
 测试时间: 2013-8-19  
 测试平面: 水平面主极化  
 极化方式: 垂直  
 峰值电平: -41.47  
 3dB宽度: 0.00  
 前后比值: 1.93  
 比对增益: -28.47  
 TCH(0): -41.47

测试频率: 960  
 测试时间: 2013-8-19  
 测试平面: 垂直面主极化  
 极化方式: 垂直  
 峰值电平: -41.26  
 3dB宽度: 77.93  
 左一旁瓣: 13.72  
 左二旁瓣: 2.48  
 左一零深: 15.52  
 右一旁瓣: 0.66  
 右二旁瓣: 1.15  
 天线倾角: -63.78

Gain: 3.10

